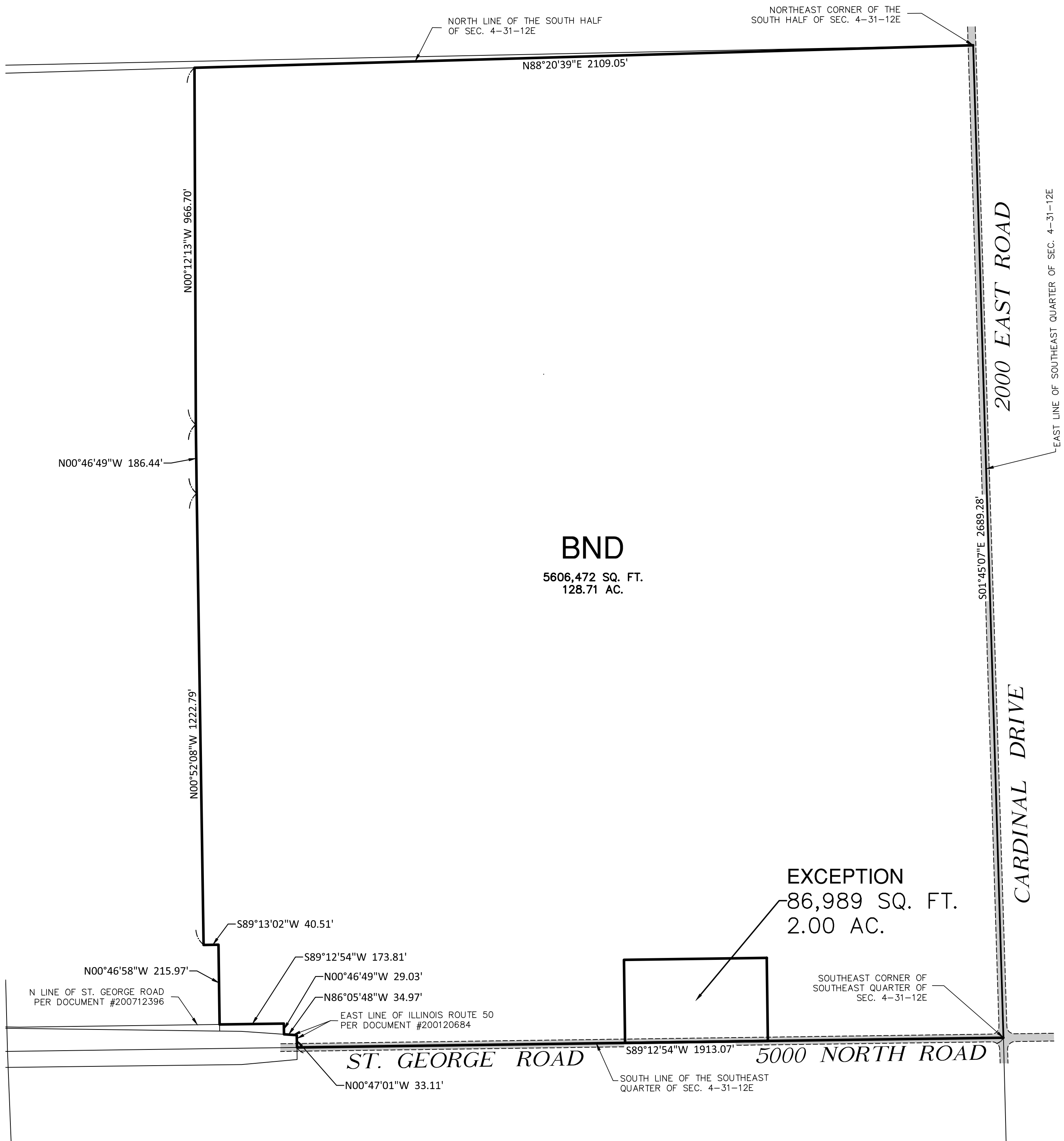


# EXHIBIT



### LAND DESCRIPTION

THAT PART OF THE SOUTH HALF OF SECTION 4, TOWNSHIP 31 NORTH, RANGE 12 EAST OF THE THIRD PRINCIPAL MERIDIAN, IN KANKAKEE COUNTY, ILLINOIS, DESCRIBED AS FOLLOWS: BEGINNING AT THE SOUTHEAST CORNER OF THE SOUTHEAST QUARTER OF SAID SECTION 4; THENCE SOUTH 89 DEGREES 12 MINUTES 54 SECONDS WEST ALONG THE SOUTH LINE OF SAID SOUTHEAST QUARTER A DISTANCE OF 1913.07 FEET TO THE EAST RIGHT-OF-WAY LINE OF ILLINOIS ROUTE 50 PER DOCUMENT NUMBER 200120684; THENCE NORTH 00 DEGREES 47 MINUTES 01 SECONDS WEST ALONG SAID EAST RIGHT-OF-WAY LINE, A DISTANCE OF 33.11 FEET; THENCE NORTH 86 DEGREES 05 MINUTES 48 SECONDS WEST ALONG SAID RIGHT-OF-WAY LINE A DISTANCE OF 34.97 FEET; THENCE NORTH 00 DEGREES 46 MINUTES 49 SECONDS WEST A DISTANCE OF 29.03 FEET THE NORTH RIGHT OF WAY LINE OF ST. GEORGE ROAD AS DEDICATED PER DOCUMENT #200712396; THENCE SOUTH 89 DEGREES 12 MINUTES 54 SECONDS WEST ALONG LAST SAID NORTH RIGHT OF WAY LINE A DISTANCE OF 173.80 FEET; THENCE NORTH 00 DEGREES 46 MINUTES 58 SECONDS WEST A DISTANCE OF 215.97 FEET; THENCE SOUTH 89 DEGREES 13 MINUTES 02 SECONDS WEST A DISTANCE OF 40.52 FEET; THENCE NORTH 00 DEGREES 52 MINUTES 08 SECONDS WEST A DISTANCE OF 1222.79 FEET; THENCE NORTH 00 DEGREES 46 MINUTES 49 SECONDS WEST A DISTANCE OF 186.44 FEET; THENCE NORTH 00 DEGREES 12 MINUTES 13 SECONDS WEST A DISTANCE OF 966.71 FEET TO THE NORTH LINE OF THE SOUTH HALF OF SAID SECTION 4; THENCE NORTH 88 DEGREES 20 MINUTES 39 SECONDS EAST ALONG SAID NORTH LINE A DISTANCE OF 2109.05 FEET TO THE NORTHEAST CORNER OF THE SOUTH HALF OF SAID SECTION 4; THENCE SOUTH 01 DEGREES 45 MINUTES 07 SECONDS EAST ALONG THE EAST LINE OF THE SOUTH HALF OF SAID SECTION 4 A DISTANCE OF 2689.28 FEET TO THE POINT OF BEGINNING; EXCEPTING THEREFROM A TRACT OF TWO ACRES DESCRIBED AS FOLLOWS: COMMENCING AT THE SOUTHEAST CORNER OF THE SOUTHEAST QUARTER OF SAID SECTION 4; THENCE WESTERLY ON THE SOUTH LINE OF THE SOUTHEAST QUARTER, A DISTANCE OF 638.88 FEET TO THE POINT OF BEGINNING; THENCE CONTINUING WESTERLY ON THE SOUTH LINE OF THE SOUTHEAST QUARTER, A DISTANCE OF 386.74 FEET TO A POINT; THENCE NORTHERLY ON A LINE PERPENDICULAR TO THE SAID SOUTH LINE OF THE SOUTHEAST QUARTER, A DISTANCE OF 225.27 FEET TO A 1/4" x 30" IRON ROD; THENCE EASTERLY ON A LINE PARALLEL WITH THE SAID SOUTH LINE OF THE SOUTHEAST QUARTER, A DISTANCE OF 386.74 FEET TO A 1/4" x 30" IRON ROD; THENCE SOUTHERLY ON A LINE PERPENDICULAR TO THE SAID SOUTH LINE, A DISTANCE OF 225.27 FEET TO THE POINT OF BEGINNING.



<b>M. GINGERICH, GERAUX &amp; ASSOCIATES</b>		<b>BRADLEY</b> OFFICE Design Firm No. 184-001808
ENGINEERING * PLANNING * SURVEYING		
Bradley Office 240 N. Industrial Drive Bradley, Illinois 60915 PH: 815-939-4921 FX: 815-939-9810		Manhattan Office 25620 S. Gougar Rd Manhattan, Illinois 60442 PH: 815-478-9680 FX: 815-478-9685
www.mg2a.com		
JOB NUMBER: 16-050	DR BY: MLZ	